



High Performance Chain

No slogans just facts

- **Maximum Durability**

Super-Link-Technology, the best materials and the experience of thousands of kilometres in the roughest conditions make the **Rohloff S-L-T 99** the most durable chain.

- **Light, but extremely strong**

At 278g/100 links the **Rohloff S-L-T 99** is not only one of the lightest chains but because of its Super-Link-Technology it is the strongest in its class.

- **Sprockets and chain rings live longer**

The large contact areas in the links (due to the Super-Link-Technology) almost eliminate elongation. This reduces the wear of the whole drive train, especially under heavy load.

- **Perfect gear shifting**

Its unbeaten sideways flexibility ensures silent running and soft gear shifting. Even radical shifting manoeuvres or extreme diagonal running are possible with the **Rohloff S-L-T 99**.

- **Super narrow**

With width of 6.8mm for the road 9-speed version the **Rohloff S-L-T 99** is one of the narrowest chains available. Pentagonal riveted pins mean maximum safety for extreme shifting manoeuvres. Because of compatibility to Shimano-IG, width of the Road 8-speed, ATB SH and the Trial-chain is 7.1mm.

- **Fully compatible**

All **Rohloff S-L-T 99** chains are running precisely and without fail, shifts fast and almost silently on all modern derailleur shifting systems. The ATB and the Trial are fully compatible to Shimano-IG.

- **Guaranteed Quality**

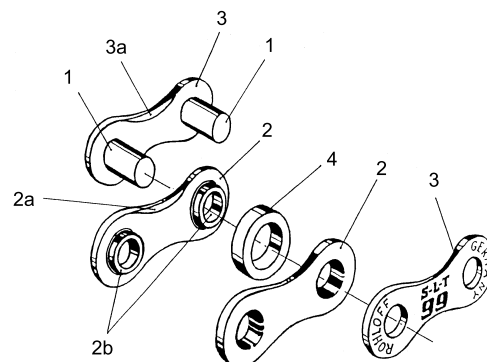
The **Rohloff S-L-T 99** is produced with greatest know-how in Germany. Every chain is checked individually before it leaves our factory.

Technical Data

Parts (pic. I):

- 1 Pin
- 2 Roller link plate with "integral bushings" (2b)
- 2a Land
- 3 Pin link plate
- 4a Land
- 4 Roller

Picture I



Material:

Link plate: high tension carbon steel, nickel-plated

Pin: stainless steel, chrome-carbide plated

Roller: high tension carbon steel, chrome-carbide plated

Type:

1/2" x 3/32", super narrow

Length:

Road: 114 links, ATB: 116 links, Trial: 110 links

Width:

Road 9-speed: 6.8mm, ATB SH & Road 8-speed: 7.1mm, Trial: 7.1mm

Weight:

Road 9-Speed: 278g/100 links, ATB SH, Road 8-speed, Trial: 290g/100 links

Support of tension:

> 11000N (1100kg)

Limit of elasticity:

> 7000N (700kg)

Side to side flexibility:

2° per link

Maximum torsion:

< 90° per meter

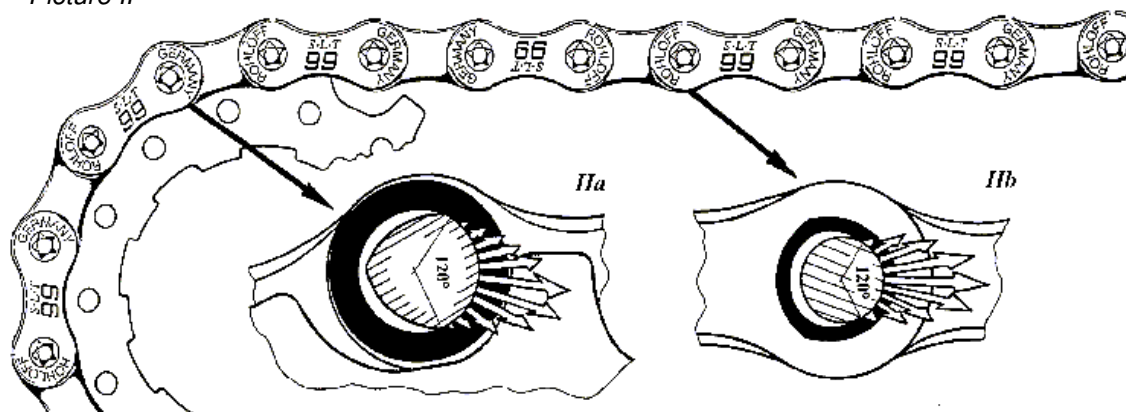
Retention force of pin:

Road 9-speed: > 2500N (250kg), Road 8-speed and ATB SH /: > 3000N (300kg), Trial: > 3500N (350kg)

Super-Link-Technology (Patent No. US 5,140,806 and EP 0396701)

The special feature of this technology lies in the trochoide form of the integral bushings which can be described as a regular triangle with curved sides. In contrast to the contact area of conventional chains describing a line, here the rollers (pic. IIa) and the pins (pic. IIb) rest against the integral bushings over a surface area of 120 degrees in the direction of the force. Therefore, the maximum force of pressure is only a fraction in comparison with other chains, increasing the durability of the **Rohloff S-L-T 99** substantially.

Picture II



On the opposite side, there is enough space between pin and integral bushing to allow the pin to move up to 2 degrees sideways (pic. IIb). Because of specially formed pin link plates (the ones with the **S-L-T 99** logo) the maximum torsion is limited to 90 degrees per meter.

This sideways flexibility guarantees very fast and precise gear shifting with all systems, especially IG, Hyperglide, Superglide, MicroDrive and CompactDrive.

Thanks to the large contact area of the rollers and pins, the construction is extremely robust with minimal distortion or flattening under heavy load. Unlike conventional chains which can stretch up to 1/10 mm per link under heavy load, the **Rohloff S-L-T 99** keeps its pitch virtually constant.

This reduces the wear of the sprockets and chain rings which is particularly important for expensive light alloy sprockets and IG, Hyperglide, Superglide, MicroDrive and CompactDrive.

In pursuit of highest quality

The **Rohloff S-L-T 99** is produced only with best materials by a bike enthusiastic team in Germany.

The stainless steel pins and the rollers are plated with an extremely hard chrome-carbide coating to withstand greatest strain. In order to maintain a constant thickness of the rollers, they are coiled from precision band steel. The nickel-plated surface of the link plates improves the gliding characteristics and protects them against corrosion. Pins and rollers are absolutely rust-proof.



ROHLOFF AG
Mönchswiese 11,
D-34233 Fulda
Tel. (0561) 510 80 0
Fax. (0561) 510 80 15