



Automatic Chain Lubrication System

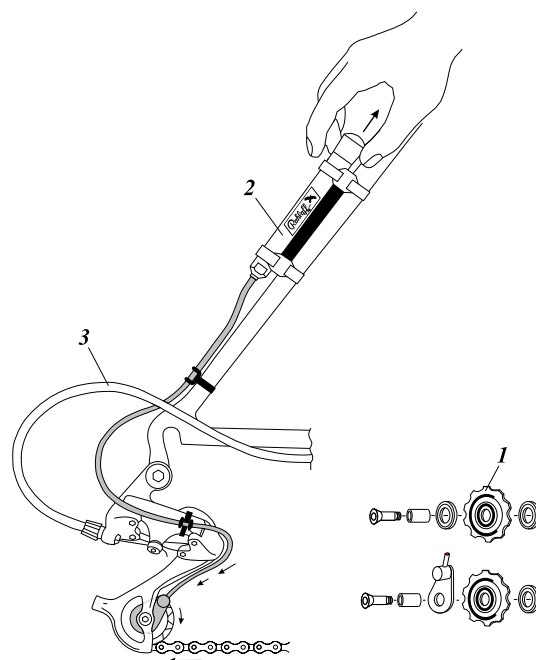
## How to lubricate

A well lubricated chain improves the function of the whole drive train and extends its durability. Up to now, it has been a problem to lubricate the chain exactly when it's necessary. With the new **Rohloff Lubmatic** you can lubricate your chain easily, at any time and with exactly the right amount of lubricant.

Whether MTB or road bike - the **Rohloff Lubmatic** has especially been developed for those who use their bike frequently.

The **Rohloff Lubmatic** consists of two special pulleys (1) made of durable aluminium, a lubricant tank (2) with an integrated pump and a hose (3) to connect the two parts.

The system can be mounted on any bike with a derailleur shifting system. If you want to lube your chain while riding, the complete system including the tank must be mounted. Otherwise, you only replace the pulleys. When the chain needs lube, you simply connect the injection jet and the tank with the tube.



- **Easy to use**  
While riding or pedalling backwards, simply pull the lid of the pump once: for the following thirty seconds the system lubricates your chain automatically.
- **Exact dispensing**  
One pull of the **Rohloff Lubmatic** pump provides the amount of lubricant you need for a correct lubrication of your chain.
- **Lubricates when you need it**  
The tank contains enough lubricant for approx. 12 chain lubrications. During rides in wet and dirty conditions the chain can be lubricated automatically.
- **The Lubricant only where you need it**  
The lubricant is pumped directly to the rollers of the chain via the pulley. Therefore, the chain stays dry and clean on the outside
- **Cares for the Environment**  
The exact dispensing and direct application reduces the consumption of lubricant substantially. For optimal results we recommend the bio-degradable **Rohloff chain lubricant**. However, the system also works with any available lubricant.
- **Rohloff Lubmatic is oiltight**  
Even when your bike is up side down: The lubricant stays in the tank.



ROHLOFF AG  
Mönchswiese 11,  
D-34233 Fuldatal  
Tel. (0561) 51 08 00  
Fax. (0561) 51 08 015