


[HOME](#) [BIKESHOPS](#) [USER REVIEWS](#) [FORUMS](#) [CLASSIFIEDS](#) [TRAILS](#) [HOT DEALS](#)
[ALL \(130 FORUMS\)](#) [29ER](#) [27.5](#) [26ER](#) [GENERAL](#) [FAT BIKES](#) [ALL MOUNTAIN](#) [NORCAL](#) [WHEELS & TIRES](#)

 User Name Password   
[Forum](#) [Gallery](#) [Classifieds](#) [Latest Forum Posts](#)
[New Posts](#) [FAQ](#) [Calendar](#) [Forum Actions](#) [Quick Links](#)
[Advanced Search](#)
[Forum](#) [Classic Mountain Bike Forums](#) [Vintage, Retro, Classic](#)  
 WTB Drop Bar Shifter Adapter Question

Results 1 to 31 of 31

**Thread: WTB Drop Bar Shifter Adapter Question**
[Like](#) [Sign Up](#) to see what your friends like.

[LinkBack](#) [Thread Tools](#) [Search Thread](#) [Display](#)

03-06-2013

#1

**Retro Dude**

 Ambivalent  
Luddite

 Reputation:  

 Join Date:  
Jun 2010  
Posts:  
288

**WTB Drop Bar Shifter Adapter Question**

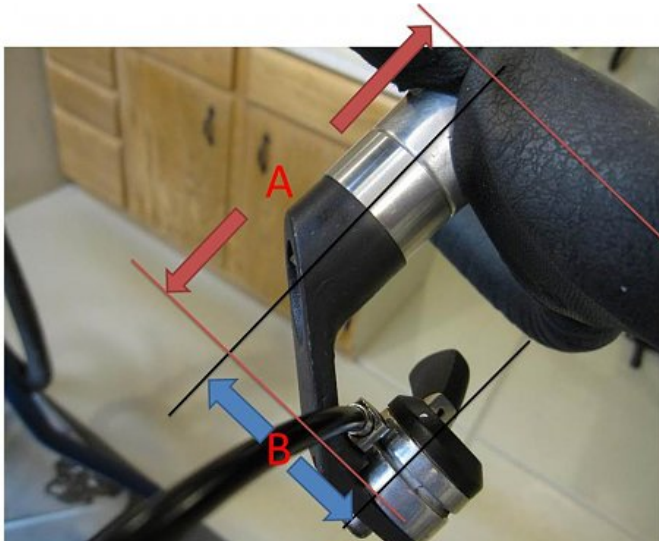
Hi - Can someone with these adapters measure &amp; tell me what dimensions "A" and "B" are?

I'm making a set and need these dimensions as a starting point.

"A" is from centerline of handlebar to back of shifter.

"B" is from centerline of bar mount to center of shifter.

Thanks!



I snagged the picture off this site, let me know if it's yours and I will give credit.

inFATuated

[Reply With Quote](#)

03-06-2013

#2

**CONTESTS**
**MTBR Newsletter**

Get the latest mountain bike reviews, news, race results, and much more by signing up for the MTBR Newsletter


**HOT DEALS**
[SEE ALL HOT DEALS >>](#)
**SRAM XX1 Eagle Rear 12 Speed**

 (was \$ 168.00 )  
**\$127.37**

[Buy Now](#)
**SHIMANO SLX BRM7000 DISC BRAKE**

 (was \$119.99 )  
**\$74.99**

[Buy Now](#)
**SHIMANO XT RD-M8000 11SP REAR DERAILLEUR**

 (was \$99.99 )  
**\$67.99**

[Buy Now](#)
**LATEST MOUNTAIN BIKE ARTICLES**
[Ride Concepts Vice Sho](#) [개인정보 보호 -](#)  
[Review](#) [약관](#)



gobsmacked  
Moderator

Reputation:  
[Progress bar]



Join Date:  
Apr 2008  
Posts:  
8,757

좋아요 24만개

bikes. Start a new thread any time. 😊

Reply With Quote

03-06-2013

#3

Retro Dude



Ambivalent  
Luddite

Reputation:  
[Progress bar]



Join Date:  
Jun 2010  
Posts:  
288

Originally Posted by [girlonbike](#)

*I would share that but FIRST, I require you to start posting up more of your bikes. Start a new thread any time. 😊*

I promise to start sharing, need some decent pics - but will start with what I have:

'98 Litespeed Unicoi - let my son borrow it, now he won't give it up.



'98 Fat Chance Ti - picked up last summer, work in progress.

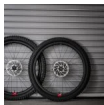


'96 Fat Chance Yo Eddy - #1 ride until I get the Ti up to speed.

'91 Spec Stumpjumper Comp - \$150 CL special for my son to take to college. Mint and all original except tires.



Hayes Introduces All-New XC Collection Featuring Some Familiar Names



Best mountain bike wheel size - is 29 or 27.5 right for you?



First Ride: Santa Cruz 5010 version 4.0



Video: This Santa Cruz 5010 edit gives mountain bikes the finger



Vittoria Mazza All Mountain Tire Review



SRAM Eagle Expanded Range Explained



좋아요 24만개

Q



inFATuated

Reply With Quote

03-06-2013

#4

**girlonbike** ◉  
gobsmacked  
**Moderator**

Reputation:  
██████████



Join Date:  
Apr 2008  
Posts:  
8,757

That's great, retrodude! I appreciate peoples' rides and effort. Now, I'll try to get somebody who is better at measuring in here to help ya! You can ask DoubleCentury how awful I am at measurements. 😊

Reply With Quote

03-06-2013

#5

**Retro Dude** ◉  
Ambivalent  
Luddite

Reputation:  
███

Thank you!



좋아요 24만개



Join Date:  
Jun 2010  
Posts:  
288

Reply With Quote

03-06-2013

#6

**DoubleCentury**

y

mtbr member

Reputation:



Join Date:  
Nov 2005  
Posts:  
2,005

Originally Posted by **gironbike**

*You can ask DoubleCentury how awful I am at measurements. 😊*

Measure once, cut twice?

Originally Posted by **Retro Dude**

*I snagged the picture off this site, let me know if it's yours and I will give credit.*

That's my photo. A = 3 inches, B = 2 inches. The silver spacer is my addition to allow room for larger-than-child's-hands to operate. Without it A = 2.5 inches. Good luck.

Reply With Quote

03-06-2013

#7

**gironbike**

gobsmacked

**Moderator**

Reputation:



Join Date:  
Apr 2008  
Posts:  
8,757

DoubleCentury is da best. Thanks!

Reply With Quote

03-07-2013

#8

**Retro Dude**

o

Ambivalent  
Luddite

Reputation:



Join Date:  
Jun 2010  
Posts:  
288

Thanks GOB &amp; DC!

I'm making mounts for a set of M732 shifters to convert the Ti Fat to drops.

inFATuated

Reply With Quote

03-07-2013

#9

**classen**

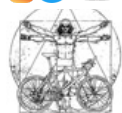
mtbr member

Reputation:

I'm immensely interested in this project. I'm currently in the process of adapting a Merlin with an LD and WTB Dirt Drop bars. I'm either going to go with some Suntour Command shifters or the M732s with a homemade DKG-style mount or perhaps some homemade WTB mounts. I've pondered how I

개인정보 보호 -





it. Please share how you are going to do this. Lots of pics too. 🍷 Thanks. 🍷

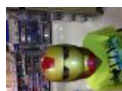
**Reply With Quote**

#10

○

Cool project RD!

Like that Yo! alot, needs more pictures.

[illegible]

Originally Posted by **Retro Dude**

*Thanks GOB & DC!*

*I'm making mounts for a set of M732 shifters to convert the Ti Fat to drops.*

I believe the Ti Fat and Yo Eddy are not the best candidates for dirt drops. Top Tubes are long and head tubes are way too short. Even the wicked, w/ it's short top tube is not good due to short head tubes.

WTB: Bomber Z2 1 1/8 steerer, in good to excellent shape OR bomber rebuild kit.

### Reply With Quote

#12

mtbr member

where could i find this adapter?

Join Date:

May 2013

Posts: 2

### Reply With Quote

#13

mtbr member

Originally Posted by **Biketastic**

*where could i find this adapter?*

100%



Time machine or a lot of patience.

Seek: Koski Trailmaster. Breezer Series 2 or 3. Cunningham Racer.



좋아요 24만개



05-13-2013

#14

**Biketastic** ◉  
mtbr member

Reputation:  
■

Join Date:  
May 2013  
Posts: 2

So they are not available to purchase anywhere? what is the name of it?  
thanks!

Reply With Quote

05-13-2013

#15

**classen** ◉  
mtbr member

Reputation:  
■■■



Join Date:  
Oct 2009  
Posts:  
201

Wilderness Trail Bikes

Reply With Quote

05-13-2013

#16

**Rumpfy** ◉  
VRC Illuminati

Reputation:  
■■■■■■■■■■



Join Date:  
Dec 2003  
Posts:  
17,648

Originally Posted by **Biketastic** ◉

*So they are not available to purchase anywhere? what is the name of it?  
thanks!*

If/when the next pair show up, be prepared to spend a lot for them.

-eric-

<http://www.rumpfy.com>

Wanted: NDS Suntour XC Pro Microdrive 175mm Crank Arm.

Reply With Quote

05-13-2013

#17

**Rumpfy** ◉  
VRC Illuminati

Reputation:  
■■■■■■■■■■



Join Date:  
Dec 2003  
Posts:  
17,648

Originally Posted by **classen** ◉

*Wilderness Trail Bikes*

Speaking of which...was that you that won the recent set?

-eric-

<http://www.rumpfy.com>

Wanted: NDS Suntour XC Pro Microdrive 175mm Crank Arm.

Reply With Quote



좋아요 24만개

**hollister**velocipede  
technicianReputation:  
Join Date:  
Sep 2005  
Posts:  
8,876Originally Posted by **Rumpfy***Speaking of which...was that you that won the recent set?*

With 6 seconds to go..

looking for 20-21" P team

Reply With Quote

05-14-2013

#19

**chefmiguel**

mtbr member

Reputation:  
Join Date:  
Dec 2007  
Posts:  
1,512

Any progress on this project RD?

Reply With Quote

05-14-2013

#20

**classen**

mtbr member

Reputation:  
Join Date:  
Oct 2009  
Posts:  
201Originally Posted by **Rumpfy***Speaking of which...was that you that won the recent set?*

yep 🍌

Reply With Quote

05-14-2013

#21

**Rumpfy**

VRC Illuminati

Reputation:  
Join Date:  
Dec 2003  
Posts:  
17,648Originally Posted by **classen**

yep 🍌

Ya buddy! Nice pick up.

-eric-

<http://www.rumpfy.com>

Wanted: NDS Suntour XC Pro Microdrive 175mm Crank Arm.

Reply With Quote

개인정보 보호 -  
약관



Fillet-brazed



mtbr member

Reputation:



Join Date:

Jan 2004

Posts:

7,696

좋아요 24만개



Originally Posted by **classen**

yep 🤔

That was a great deal considering all that was included. Usually they sell for that much alone.

Reply With Quote

05-15-2013

#23

Retro Dude



Ambivalent  
Luddite

Reputation:



Join Date:

Jun 2010

Posts:

288

some progress

Been busy with work, eagle ceremony, high school graduation, college graduation, 25th wedding anniversary, yada yada yada... anyway, this is as far as I've gotten. Modeled up & 3d printed for fit/reach. Need to get this wrapped up, going to run drops for the Blackfly Challenge again. My son confiscated my Unicoi with drops and I don't want to ride/race 40 miles of dirt roads with flats. The plan was to model & print then have friend fab a set from aluminum, looks like I'll be using the printed parts.







좋아요 24만개

Q



inFATuated

Reply With Quote

05-17-2013

#24

CS2

mtbr member

Reputation:



Join Date:  
Jul 2007  
Posts:  
2,942

Originally Posted by **Retro Dude**

*Been busy with work, eagle ceremony, high school graduation, college graduation, 25th wedding anniversary, yada yada yada... anyway, this is as far as I've gotten. Modeled up & 3d printed for fit/reach. Need to get this wrapped up, going to run drops for the Blackfly Challenge again. My son confiscated my Unicoi with drops and I don't want to ride/race 40 miles of dirt roads with flats. The plan was to model & print then have friend fab a set from aluminum, looks like I'll be using the printed parts.*



좋아요 24만개

Q



Very nice. Are you making extras?

A garage full of steel frames means happiness.

Reply With Quote

05-18-2013

#25

**Jak0zilla**   
Humanoid  
Lobster

Reputation:  




Join Date:

Wow! 3D printed retro bike parts! Could jet packs and flying cars be far behind?!

Is the plastic sturdy enough to hold up to riding? Any idea about UV resistance?



672

좋아요 24만개

Q

Don't call it a gooseneck.

Reply With Quote

10-24-2014

#26

CS2

mtbr member

Reputation:



Join Date:  
Jul 2007  
Posts:  
2,942

Originally Posted by CS2  
*Very nice. Are you making extras?*

It's been over a year. How's the project progressing?

A garage full of steel frames means happiness.

Reply With Quote

10-26-2014

#27

Retro Dude

Ambivalent  
Luddite

Reputation:



Join Date:  
Jun 2010  
Posts:  
288

Had to drop that idea, too much flex in the FDM plastic parts.

Went a different route to mount the thumb shifters:



Now working on replacing the clamp with a custom clamp for a 31.8 bar.



좋아요 24만개

Q

inFATuated

Reply With Quote

10-28-2014

#28

CS2

mtbr member

Reputation:



Join Date:  
Jul 2007  
Posts:  
2,942

Originally Posted by **Retro Dude**  
*Had to drop that idea, too much flex in the FDM plastic parts.  
Went a different route to mount the thumb shifters:*



*Now working on replacing the clamp with a custom clamp for a 31.8 bar.*

That's pretty ingenious. Pauls Components has a handlebar mount for Shimano thumb shifters that mounts on the tops.

A garage full of steel frames means happiness.

Reply With Quote

10-28-2014

#29

Retro Dude

o

Ambivalent  
Luddite

Reputation:



Join Date:  
Jun 2010  
Posts:

Unfortunately, Paul's are only for bar-end & downtube shifters, not for thumb shifters.



Reply With Quote

10-28-2014

#30

CS2 



mtbr member

Reputation:  




Join Date:  
Jul 2007

Posts:  
2,942

 Originally Posted by **Retro Dude** 

*Unfortunately, Paul's are only for bar-end & downtube shifters, not for thumb shifters.*


You're right. It's time for thumb shifters to make a comeback. Everything old is new again.

A garage full of steel frames means happiness.


Reply With Quote

10-28-2014

#31

whatisaidwas 

mtbr member

Reputation:  


Join Date:  
Apr 2014

Posts:  
114

 Originally Posted by **CS2** 

*It's time for thumb shifters to make a comeback.*

Thumb shifters went away? When? 😊

Reply With Quote

« Previous Thread | Next Thread »

Similar Threads

Yet another adapter question.... By hawkychick in forum Brake Time	Replies: 4 Last Post: 01-09-2013, 09:42 PM
Rohloff drop bar shifter By gregclimbs in forum Internal Gear Hubs	Replies: 0 Last Post: 04-17-2012, 08:26 AM
Question: 142+ vs 135 to 142+ adapter By pedal-man in forum Wheels and Tires	Replies: 2 Last Post: 11-03-2011, 07:59 PM
Drop bar 29er build, shifter Qs By GTscoob in forum 29er Bikes	Replies: 6 Last Post: 03-24-2011, 08:50 PM
Drop bar/STI Shifter on a MTB question By discombobulated_conundrum in forum 29er Bikes	Replies: 21 Last Post: 02-26-2011, 04:36 PM

Members who have read this thread: 6

Posting Permissions

You may not post new threads

You may not post replies

You may not post attachments

You may not edit your posts

**BB code** is On

**Smilies** are On

**[IMG]** code is On

**[VIDEO]** code is On

HTML code is Off

**Trackbacks** are Off

**Pingbacks** are Off

**Reffbacks** are On

Forum Rules

-- Fixed

Contact Us mtbr.com Archive Web Hosting Top

All times are GMT -7. The time now is 07:19 PM.

Powered by **vBulletin®** Version 4.2.0  
Copyright © 2020 vBulletin Solutions, Inc. All rights reserved.  
Search Engine Friendly URLs by **vBSEO** 3.6.1

Mobile | Fixed | Wide

개인정보 보호 -  
약관



Q

THE SITE

[USER REVIEWS](#) | [FORUMS](#) | [EDITORIAL REVIEWS](#) | [CLASSIFIEDS](#) | [TRAILS](#) | [HOT DEALS](#)

ABOUT MTBR

[ABOUT US](#) | [CONTACT US](#) | [TERMS OF USE](#) | [PRIVACY POLICY](#) | [ADVERTISING](#) | [COPYRIGHT](#)

VISIT US AT

[FACEBOOK](#) | [TWITTER](#) | [YOUTUBE](#)

© Copyright 2020 VerticalScope Inc. All rights reserved.